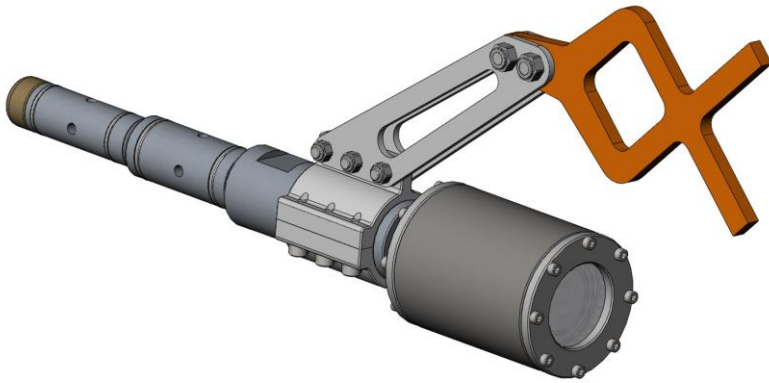


Macduff Robotics

Intelligent Subsea Equipment



Description:

An ISO13628 dual port hotstab developed for port data logging. The unit is fitted with an absolute pressure data logger, the measurement range of which can be chosen specific to the seawater depth and maximum pressure to be measured to give the best possible accuracy of measurement.

Dual port data logger stab – 10000psi

MAIN FEATURES

- ISO13628 compliant stab.
- 10000psi rated.
- Zylan coated for non-stick engagement.
- Configurable for data logging on A or B port, or both interconnected.
- Configurable handle, with built in rubber compliance.
- T-bar, D-type, and fishtail handles available.

Further Information

Spares kit also available

Equipment supplied

Standard tool supply includes

- Stab and logger assembly
- PC connection cable for data retrieval.
- Pressure test and logger calibration certification.



info@macduff-robotics.com

Specifications

Weight in Air	TBC
Weight in sea water	TBC

Options

- Logger pressure ranges (absolute)

Information contained in this data sheet is up-to-date and correct as at the date of issue. All product designs, specifications and data are subject to change without notice to improve reliability, function, design or otherwise. No express or implied warranties are given.